

Floor Plans: 1383 Winterberry Drive

Approx.: 3,905 sq. ft. above grade (MPAC)

Approx.: 5,823 sq. ft. including lower level (MPAC)

AB&A

AMY BRAY & ASSOCIATES

Main Level: 1,918 sq. ft.



AMY BRAY & ASSOCIATES

Amy Bray | Sales Representative, Sr. Vice President - Sales
Alexandria Wood | Sales Representative

c 416.802.5017

t 905.845.0024

amybrayassociates@sothebysrealty.ca

amybrayandassociates.ca

Sotheby's | Canada
INTERNATIONAL REALTY

For additional information,
visit amybrayandassociates.ca

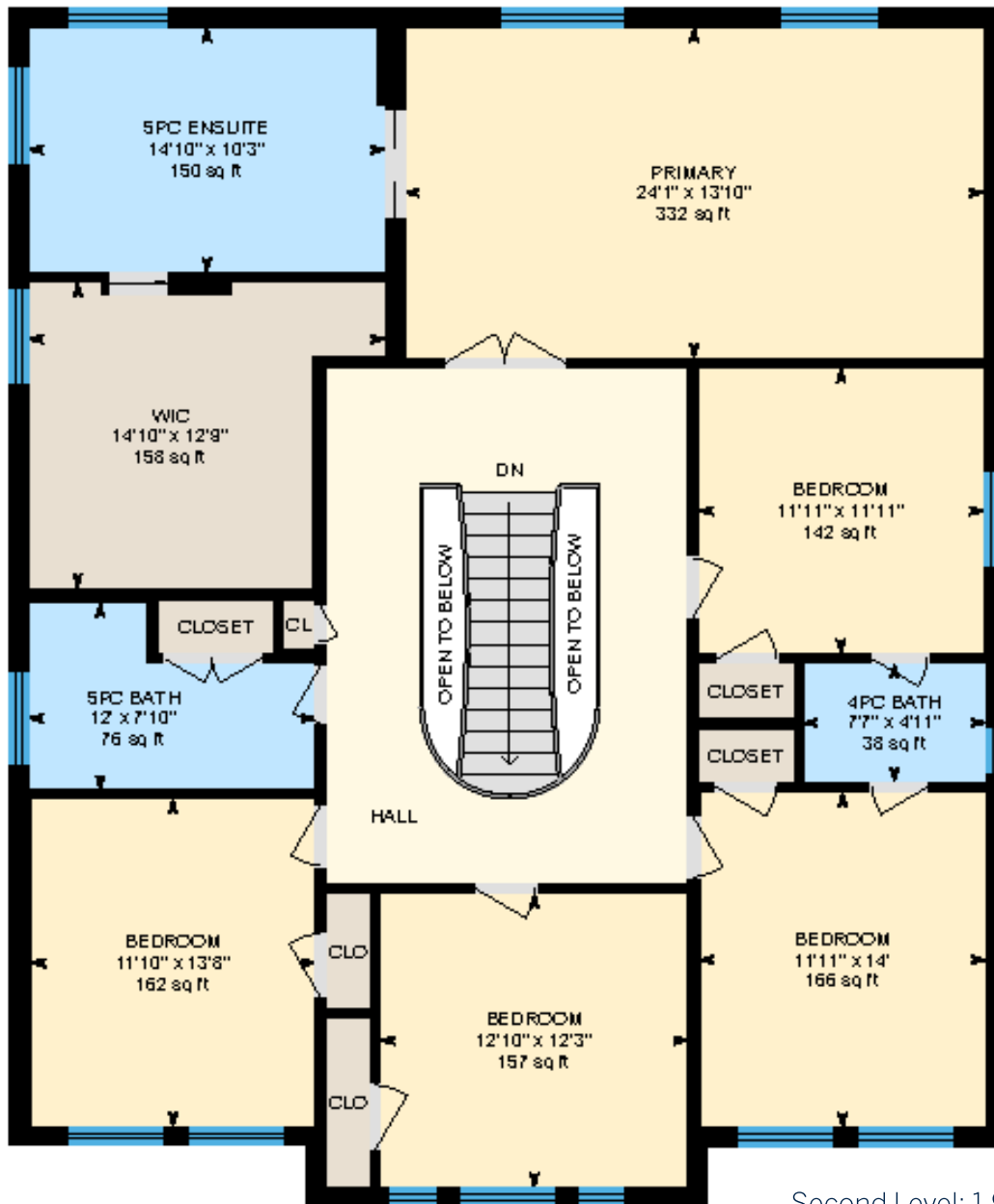
Floor Plans: 1383 Winterberry Drive

Approx.: 3,905 sq. ft. above grade (MPAC)

Approx.: 5,823 sq. ft. including lower level (MPAC)

AB&A

AMY BRAY & ASSOCIATES



Second Level: 1,987 sq. ft.



AMY BRAY & ASSOCIATES

Amy Bray | Sales Representative, Sr. Vice President - Sales

Alexandria Wood | Sales Representative

c 416.802.5017

t 905.845.0024

amybrayassociates@sothebysrealty.ca

amybrayandassociates.ca

Sotheby's | Canada
INTERNATIONAL REALTY

For additional information,
visit amybrayandassociates.ca

Floor Plans: 1383 Winterberry Drive

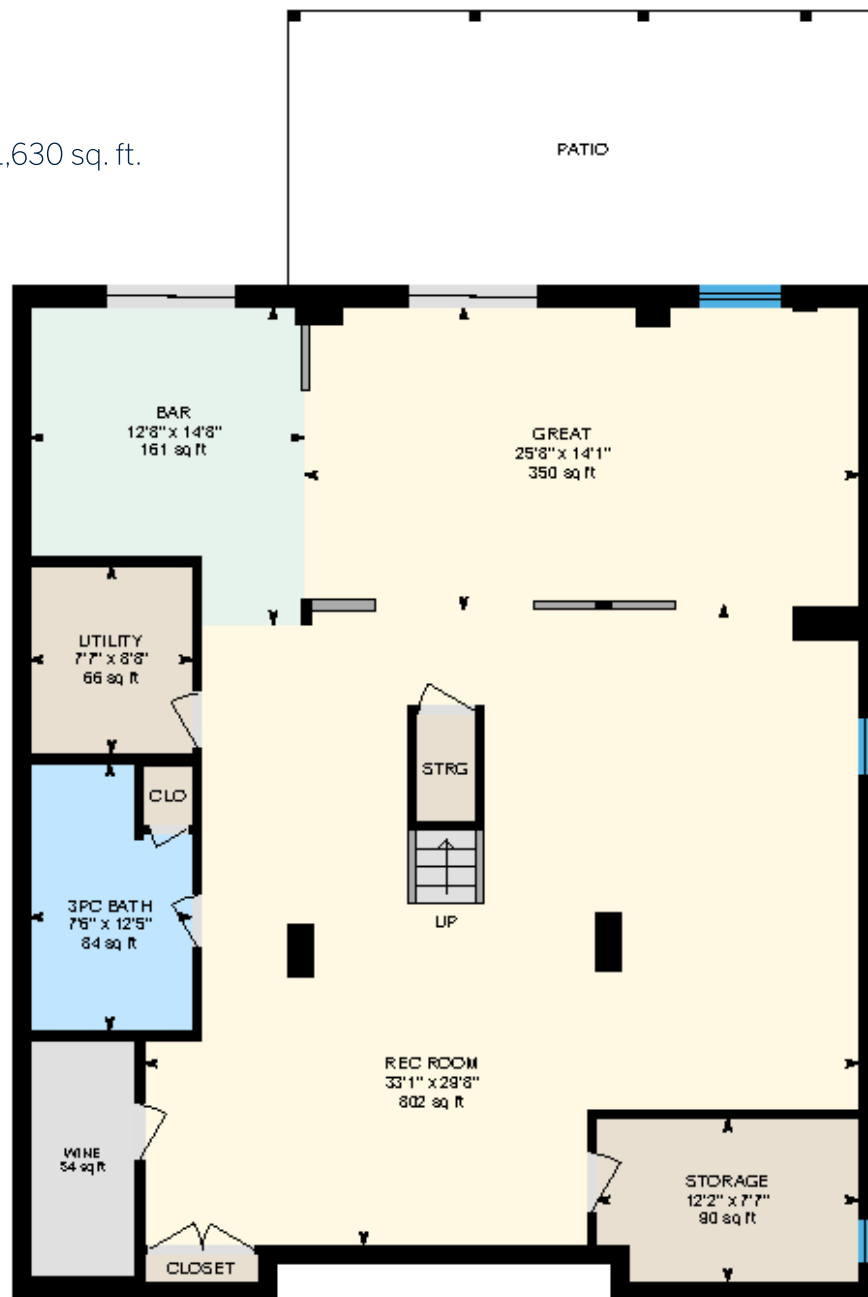
Approx.: 3,905 sq. ft. above grade (MPAC)

Approx.: 5,823 sq. ft. including lower level (MPAC)

AB&A

AMY BRAY & ASSOCIATES

Lower Level: 1,630 sq. ft.



AMY BRAY & ASSOCIATES

Amy Bray | Sales Representative, Sr. Vice President - Sales

Alexandria Wood | Sales Representative

c 416.802.5017

t 905.845.0024

amybrayassociates@sothebysrealty.ca

amybrayandassociates.ca

Sotheby's | Canada
INTERNATIONAL REALTY

For additional information,
visit amybrayandassociates.ca